

Style Factory

by



Operation Manual

Congratulations for purchasing our product. We wish you many hours of pleasure when converting, editing and creating your styles.

This manual describes the function for all program variations. If you have decided for Style Factory Universal you will have access to all mentioned functions. For single versions please only pay attention to the relevant chapters for your version. As proceeding is very similar in all versions you will be able to make best use of the program with all its features in any case.

Table of content

License agreement	3
System requirements	4
Installation	4
Registration	5
Program start	6
Style module	7
Play Style module	8
Style Arranger	10
Phrase Extractor	14
Updates	15

License agreement

Before starting this software, you shall be aware of the following licence and copyright regulations.

By installation and running the program the user accepts the following license agreement in all points:

The user is permitted to use this software on a single computer system only. The user is permitted to make one backup copy of the software. Copying and distributing the software (even for free) and manipulations on the program code are strictly prohibited.

Copying and re-printing the manual in total or partially is prohibited, unless the owner of the copyright gives his written permit.

The conversion of musical data being subject to copyrights of their relevant manufacturers is permitted for private use only. Making use of styles having been created from copyright-protected data by means of this program for commercial purposes is strictly forbidden and may be prosecuted according to the laws of your country.

The maker of this program takes no responsibility for malfunctions or results of malfunctions. Furthermore, he cannot guarantee this program to match the expectations of the buyer.

By registering the software by means of the pin2 number the buyer of this software finally confirms the purchase. Return of the software will be excluded hereafter.

Violations of above mentioned license regulation may be taken to court.

Copyright EMC 1994 – 2005

All rights reserved

EMC Software Vertriebs GmbH & CoKG
Postfach 100252
D 51402 Bergisch Gladbach
Germany

System requirements

The minimum configuration for Style Works 2000 is a computer with a Pentium 133 MHz processor, 32 MB RAM and Windows 98 and a monitor with a minimum resolution of 800x600 pixels and 256 colours.

The program works with Windows 98, ME, 2000 and XP. Running under NT is possible but we cannot guarantee for appropriate functionality in every case.

Installation

As usual Style Factory is being installed by means of a setup program. Click the „Start“ box in the Windows task bar and then on „Execute“.

Enter the following command line:

„a:\setup.exe“ resp. when installing from CD rom the letter of the CD drive and the rest of the command line, e.g. „g:\setup.exe“.

Now the setup program starts and the installation is being executed automatically. Please follow the advice given by the program. In case there any out of date system files required for the program these will be replaced and the computer must be re-booted. The setup program will inform you about this operation if necessary.

After the installation a program group will be installed from where you can start the program by selecting „Start > Programs > EMC Style Works“ (Standard installation). The name and location of the installation folder can of course be selected by free choice, we recommend to maintain the default path though if there is no real reason for a different installation path.

Attention: While installing all other applications should be closed to avoid conflicts in accessing system files.

In case the setup program does not start, please deactivate virus scanners and firewalls as they may prevent access to system files by the setup program.

Of course you can reactivate them after the installation has been executed

Registration

The program can be run for four days from the date of first run without a registration.

When clicking the registration form and clicking the „Okay“ button the program will tell you how many days are still left.

After the four days are over you still have access to the registration form, but no more to any other program functions.

To register proceed like this:

After starting the program the registration form shows up. Now click the „Start Registration“ button and insert the disk carrying the serial number label into the floppy drive (resp. the registration disk for versions on CD).

Confirm to have the disk inserted when clicking (normally) „Drive A“. The disk must not be write-protected, unless you will get an error message. After some seconds the serial number and a (random) PIN1 number will show up in the registration form.

To receive your PIN2 you now have the following options:

- Call the telephone number displayed in the registration form (24 hours available) and tell our employee the serial number and PIN1 as currently displayed in the program.
- You make use of the registration form in our shop at www.emc-musicsoftware.de > „English“ > „Registration“

- Simply write an e-mail containing the above mentioned data to EmcSoftware@aol.com or info@emc-musicsoftware.de .

After receiving your PIN2 enter this number into the box showing the two question marks (do not forget to remove them) and confirm your entry by clicking „Okay“ or pushing the „Enter“ resp. „Return“ key. If you have entered the number properly you get a confirmation message saying your program has been registered. From now on the registration form will not show up anymore and the program will start normally.

If you want to install the program on another computer you must repeat the registration procedure.

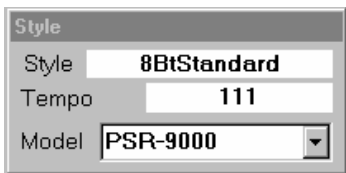
A change of the operation system of a complete new installation of your computer may require a repetition of the registration as well.

Program start

After starting Style Factory the main page of the program will show up. In the lower section of the screen the current operation mode and the relevant instrument is being displayed.

On the left the available program modules show up. By clicking an icon (e.g. „Style Arranger“) the relevant module will open. Only one module can be active at a time except for the „Play Style“ module which can be used simultaneously with the other modules.

Further the small „Style“ module showing the style name and tempo is active at any time. In case the „Play Style“ or the „Style“ module should be covered by another module you can bring it back to the foreground by clicking the relevant entry in the „Select“ menu.



The „Style“ module

Here you can alter the name of the current style and the tempo. For many instruments the internal style name is not necessarily identical to the name which is used for saving the style to disk. In the „Style“ module you define the internal name which will be displayed in the instrument (after loading). This name is also the default setting for the file name, but you are free to choose any other name for saving.

Special features:

Yamaha – You can select your instrument in the combo box „Model“. Basically all instruments of the series PSR-9000/740 resp. 8000/730 etc. make use of the same style format (Yamaha Style File Format, SFF format), but they differ in regard of the available sounds and the number of style parts. Therefore we recommend to select your instrument here. If it is not part of the list then select „PSR-9000“ for instruments with 4 variations and „PSR-8000“ for instruments with 2 variations.

Korg – As Korg instruments save several styles into one single file the desired user style position in the style bank must be selected. The current selection is being displayed by the text "User Style xx". E.g. if User Style 02 is the current selection all operations will affect the style on position 2, i.e. you will find a new, converted style in this position after loading the file into your instrument. You may select several user style positions for the conversions first and then save them all together. The file

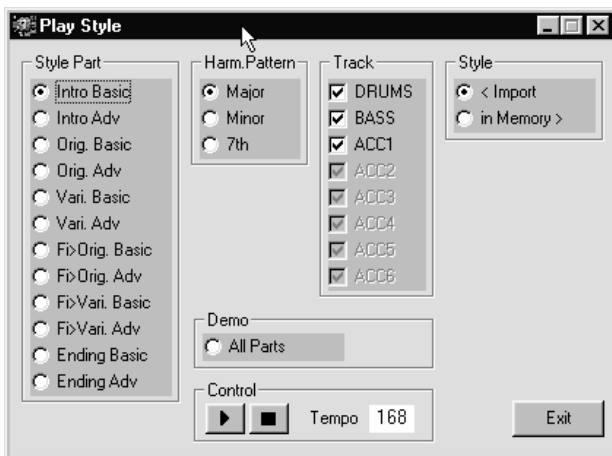
name (which will appear on the file list in your instrument) will be set when saving, default value here is the name of the style converted or created last. In other cases the original file name will be maintained.

In addition there is a selection of the instrument here, too.

The old Korg series (i1-i5 incl. ix300) makes use of an identical style format, but from i4s and up Arrangements and Styles are always loaded together and therefore must be saved in the program together as well. i1 – i3 provide even a separate loading of user styles. We recommend to select your instrument here.

For the new i-series (i30-i50) there are differences regarding the number of user styles in a bank, sounds and how the style data are being organized on disk (i30 creates a folder with several files, i40/50) not.

The „Play Style“ module



Here you can play the currently loaded style with the PC sound card (or with your instrument via midi output). The single style

parts can be played with all existing harmony patterns (regularly major, minor and 7th), single tracks can be muted. As an additional control empty tracks resp. empty harmony patterns are inactive and not selectable.

The icons of the „Start“/“Stop“ buttons equals those of a tape deck, in addition you can start /stop the playback by pushing the „Space“ key on your computer.

Special features:

Yamaha – as the playback result would not be very satisfying when playing the data exactly as stored in the style (due to the very complex track parameters) the program simulates the result of playing a major, minor and seventh chord (marked by the text „(sim.)“ next to the name of the harmony pattern).

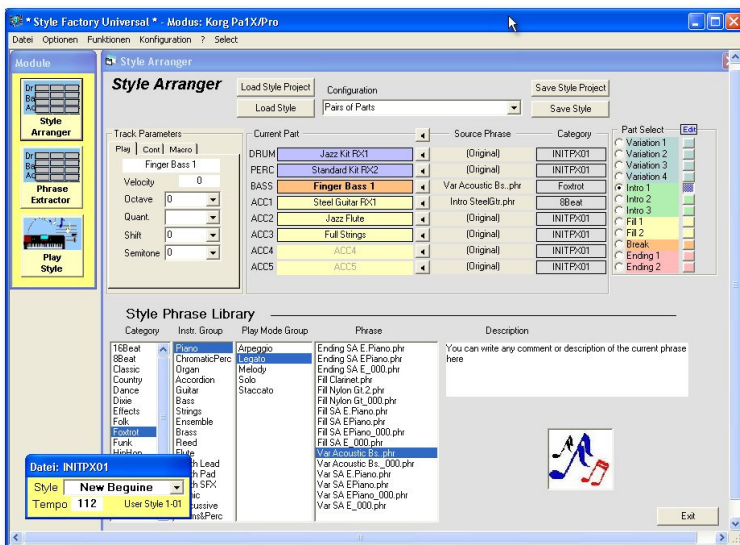
Technics – as there is more than one memory bank for KN2000 and up the desired bank can be selected in a combo box.

Wersi – for the old and new Pegasus series the function of the „Advanced“ button on the instrument is being simulated (i.e. the tracks „DRUM+“ and „ACC+“ are being switched on and off accordingly).

Calling the Play Style module when inside the Style Converter:

By clicking the „**Details**“ button next to the score symbol you can call up the Play Style module. Now you can even listen to the currently loaded style in the destination format („Memory“) as well as the style currently loaded for conversion („Import“).

The Style Arranger



In the Style Arranger you can modify an existing style or compile a completely new one from elements of the „Style Phrase Library“ in a very simple way.

In the lower area of the screen you find the Style Phrase Library with thousands of style elements sorted by musical category, instrument groups and playing technique.

In the upper area one part of the currently loaded style is being displayed (e.g. „Intro 1“) showing the available tracks (Drums, Bass, Acc1 etc).

Furthermore there are functions allowing to set parameters for the tracks and to execute various modifications. Also loading and saving functions can be found here and the part selection bar (on the right).

Proceed like this:

- A default style is being loaded on program start which you can use as a template. Of course you can use any other style as well in order to add new elements or modify it in any other way.

Click „Load Style“ to do so or call up the „Load“ function in the file menu.

- By clicking the speaker icons you can now listen to either a single track or the whole style part (icon on top of the single tracks). Simply click the desired speaker icon and the playback will start. When clicking another speaker icon the playback will change accordingly, you can stop playback by clicking the same icon for a second time (or pushing the “0” key).

- Select the part you want to modify in the „Part Select“ list on the right.

- look for suitable elements in the Style Phrase Library which you can use for the modification of the current style. Click the desired category („8 Beat“), then on the instrument group and finally on the desired type („Legato“, „Chord“, „Melody“). Elements matching this selection are now showing up in the right column.

- when clicking a phrase playback of this phrase will start immediately.

- having found an interesting phrase just move it by „Drag & Drop“ into the desired destination location in the currently visible style part. After releasing the mouse you will immediately listen to the result as the style part is being played back including the new phrase.

Feel free to experiment with any elements this way in order to do your own creations.

Important: with enabled option „Copy to following parts of same category“ the new element will be copied to all later parts of the same type.

Example: You replace the bass track in Variation 1; with the option enabled the new bass track will also be copied to Variation 2-4.

In case you are in Variation 3 the new element will only be copied to Variation 4, but not to Variation 1 and 2.

The same logic will be applied for the other part groups like „Intro“, „Ending“ and „Fill“.

You can save a lot of time by making use of this efficient mechanism.

Further editing functions

In the „Track Parameters“ box (upper left area) you can find more tools for the fine tuning of your styles.

The most important parameters (Sub page „**Play**“):

Sound – Click the displayed sound name and select a new sound from the list showing up.

Velocity – Modify the velocity values, practically a volume and filter change in most cases.

Octave – Transposition by octaves.

Quant. – Quantization of time positions for the single notes; useful for styles having been recorded not very exactly or even for a creative manipulation.

Shift – Moving a track on the time axis; as well for correction or experimenting.

Semitone - Transposition by semitones.

For some formats there are additional parameters available. Please refer to the user manual of the respective instrument.

Some additional features for the creative alteration can be found on the „**Macro**“ sub page.

Swing Factor – moving the time position of notes in order to get a triplet character (adjustable intensity).

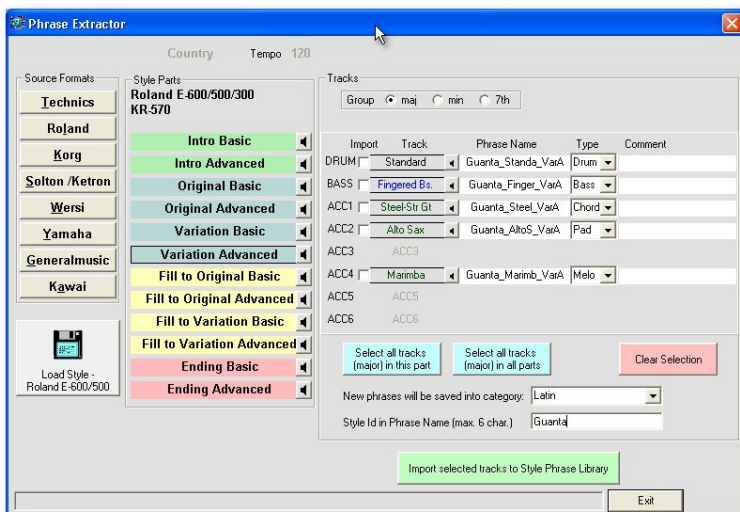
Humanize – randomization of the time positions for note events in order to simulate the not perfect timing of “human” musicians.

Guitar Style – mainly suitable for chord tracks. Simulation of the up and down strumming by moving the time positions of note events accordingly.

All parameters on the pages „Play“ and „Macro“ are playback parameters, i.e. they do not alter the actual data in the moment you make any settings.

The style data will be recalculated according to the settings made whenever you save a style or leave the Style Arrangers

The Phrase Extractor



In this module you can add any elements of any styles to the Phrase Library. Any keyboard style can be used as source.

Proceed like this:

- Select the source format in the left column
- Load a style; select the style in the Windows file selector.
- Listen to the single parts of the style (big speaker icons next to the part names) or single tracks (small speaker icons next to the individual tracks).
- Set the flag in the „Import“ column for those tracks which you would like to add to the Style Phrase Library.
- Check the column „Type“. In case the set value does not seem to match very good do a correction.
- In the „Comment“ box you can add some comment lines to the track which will be displayed in the Phrase Library later on.
- Select a suitable category („Latin“, „8Beat“ etc).

- Check the default names of the tracks; for obvious reasons the names should be suitable in order to identify the tracks later on in the Phrase Library.
- In the box „Style Id in Phrase Name“ you can enter a short marker which will then become part of all the track names.
- By clicking the „Import selected tracks ...“ button all selected tracks will be added to the Style Phrase Library and will be available for your own creations like the default phrases.

Updates

In order to keep your Style Factory up to date we recommend to check the following address from time to time:

www.emc-musicsoftware.de/updates/updates.html

The download of new versions is for free regarding bug fixing and other minor improvements, other new features in the future may be available for a moderate update charge. See the page for more information.

After the download unpack the zip file (one time), deinstall your current version and then repeat the installation procedure (run Setup). A new registration is not required provided Style Factory has already been registered on the relevant computer.

Hint: We recommend to deinstall the previous installation first in order to make sure that only the latest files will be used by the new version.